

How do I install the ClassPad Manager Software?



Welcome to Lesson 0.2

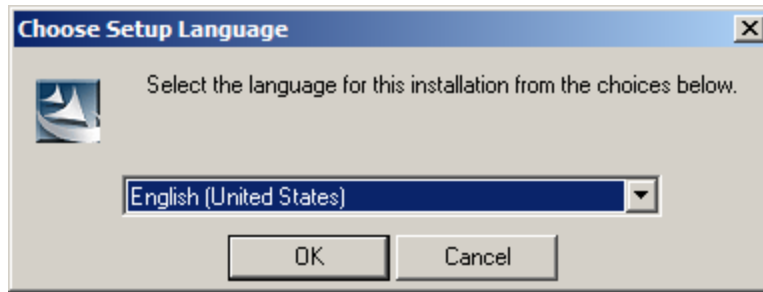
If you are taking ClassPad 101 as a teacher, **please skip this lesson** and login to ClassPad 101. The ClassPad Manager Training version can be accessed within the ClassPad 101 course by following a link near the top of the CP101 page labeled **Downloading the ClassPad Manager Training Software**.

If you are taking this course through your school, your instructor will provide you with directions on how to download the ClassPad Manager software to the **My Documents** folder on your hard drive. You will also be given an **install key** (a long list of numbers and letters). If you have not received directions and an install key yet, please email your instructor and ask for directions on downloading the software and the install key.

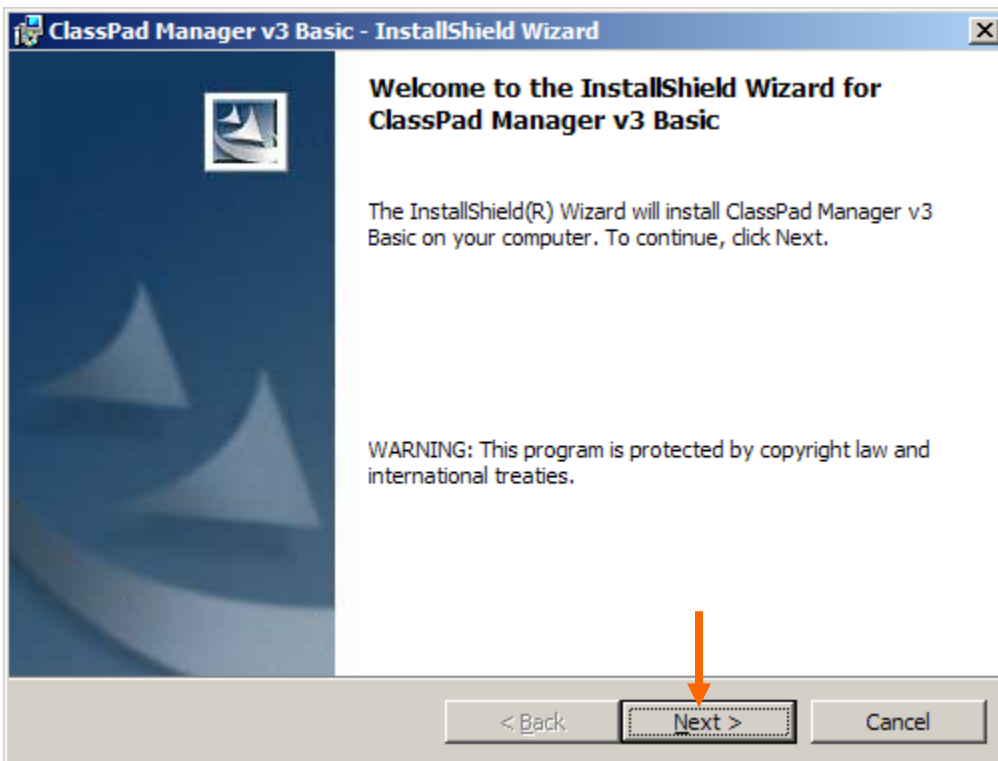
Once you have the software downloaded to your **My Documents** folder, you will be ready to begin installation of the software. When you double click on **setup.exe**, you will be asked to agree with each dialog that appears to install the software. Detailed installation steps are below.

Installing the ClassPad Manager software:

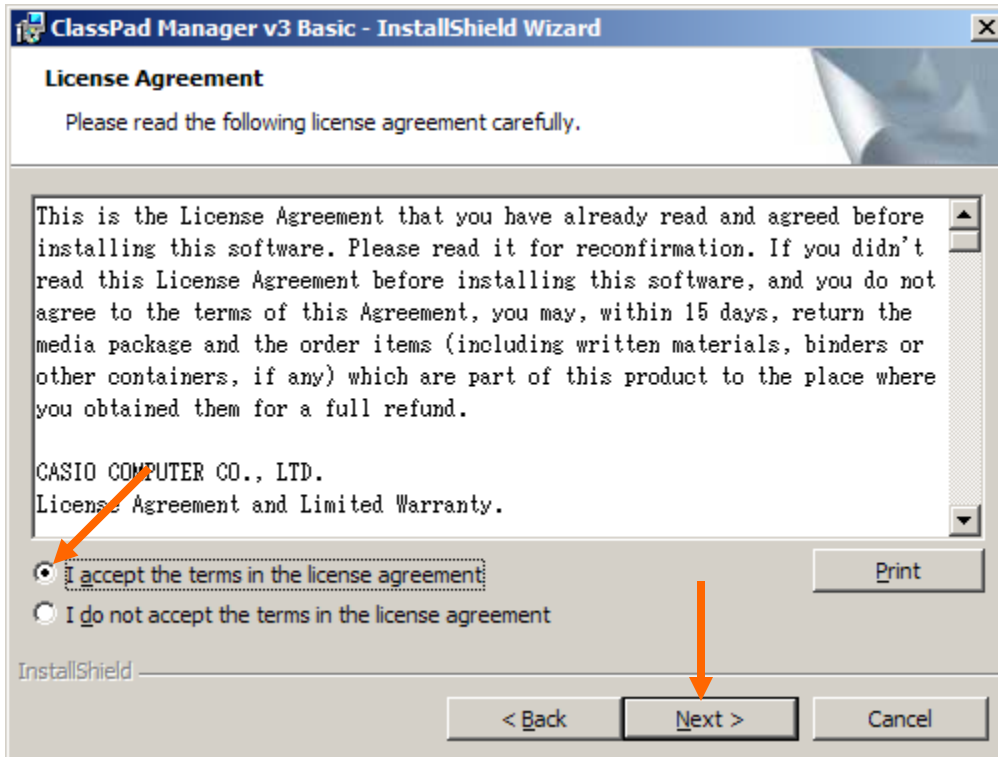
1. Open your **My Documents** folder. One way to do this is to **double click** the **My Computer icon** on your desktop. In the window that opens, **locate** your **My Documents** folder and **double click** it.
2. **Double click** on the file named **setup.exe** ( setup **or**  setup).
3. A dialog will appear asking you to select a language. **For English**, just click **OK**.



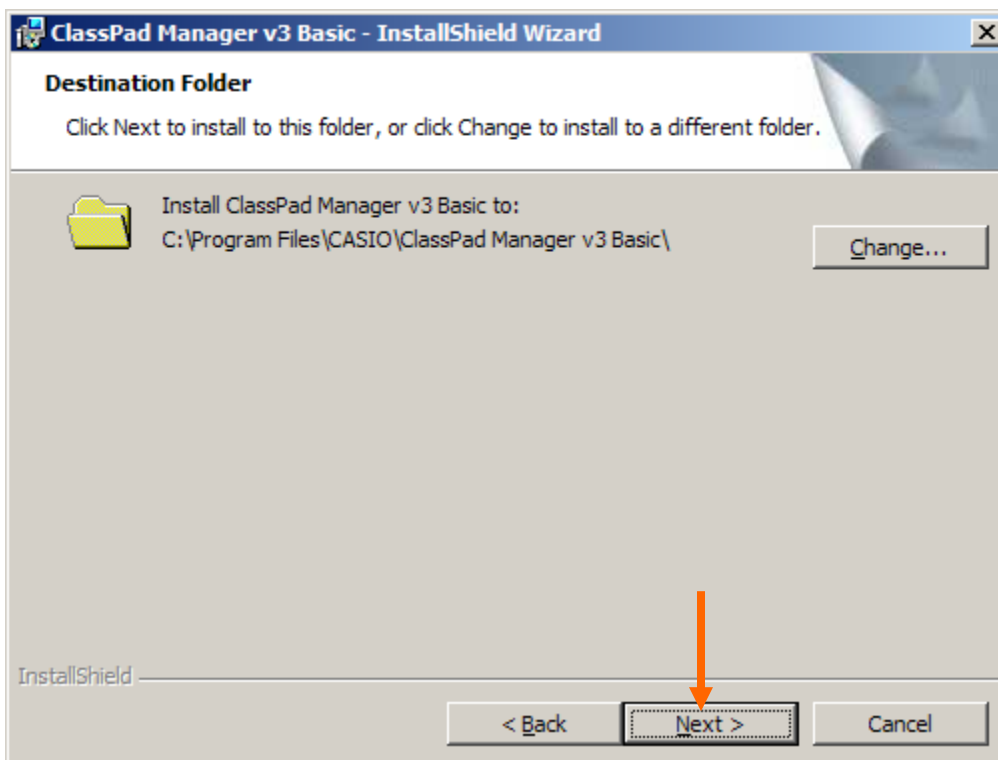
4. A dialog will appear that says ***Preparing to Install...*** Please wait.
5. Within seconds, the following dialog will appear. **Click Next.**



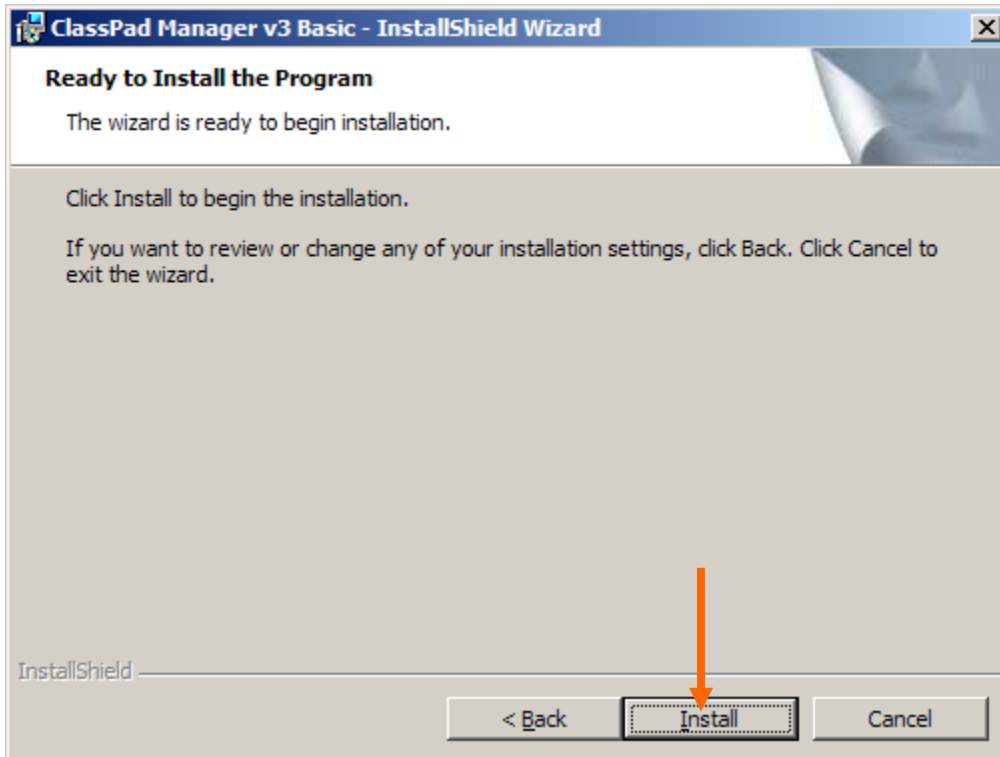
6. Read the license agreement, **click to accept**, and then **click Next.**



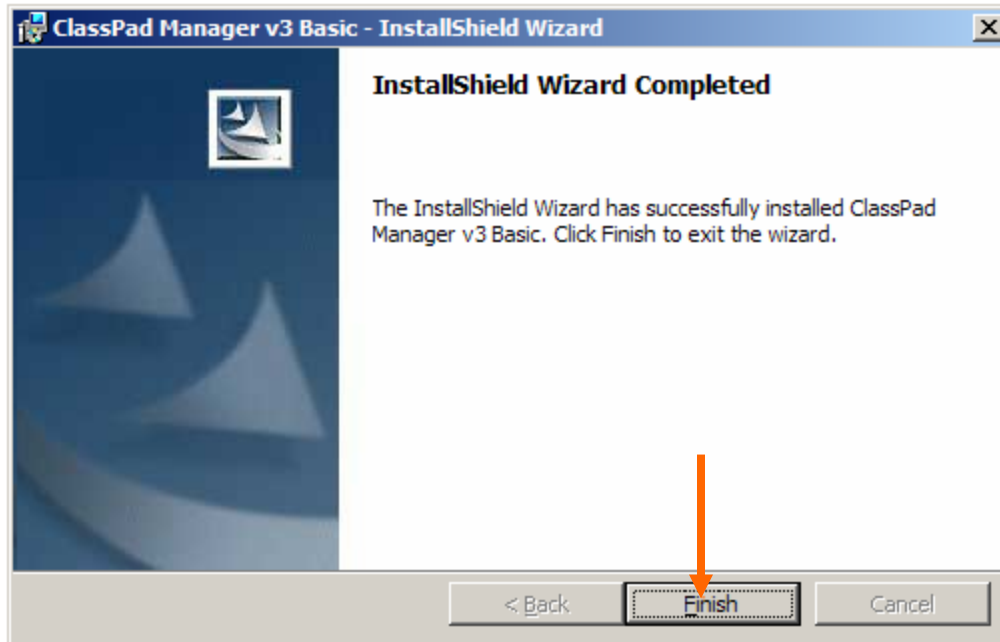
7. To choose this destination folder, **click Next** (strongly recommended).



8. **Click Install.**

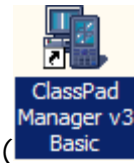


9. **Click Finish.** This ends the installation process!

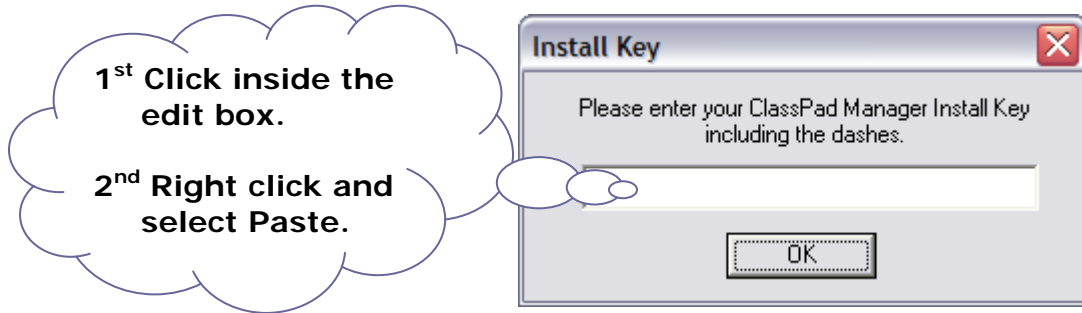


Very Important: Install Key Instructions

1. You should have an install key by now! If you have not received it yet, email your instructor and request an ***install key right away.***
2. **Copy the *install key.*** To do this, select the install key and right click on it. Select **Copy** from the menu that appears.



3. **Double click** on your desktop **short-cut** ().
4. **The very first time** you try to open the ClassPad Manager, the following dialog will appear:



5. Paste the **install key** into the dialog and click **Ok**. Or, you can type the install key, but this takes longer.
6. **Great job!** You should now see the ClassPad Manager. **If you do not see the ClassPad Manager**, let your instructor know right away.